



Technical Folder No. 32, 2004

HYBRID RICE KRH - 2



**TECHNOLOGY ASSESSMENT
AND
REFINEMENT THROUGH**

**INSTITUTION VILLAGE LINKAGE
PROGRAMME (NATP)**



**ICAR RESEARCH COMPLEX FOR GOA
ELA, OLD GOA, GOA - 403 402**

INTRODUCTION

Rice is a staple food for Goan population. But area under rice cultivation is declining in the state due to several reasons which include non-availability of labour, increasing cost of cultivation, fragmentation of land etc. Among the limited available options to increase the production and productivity of this important crop, hybrid rice cultivation is most feasible and readily adaptable option in the present scenario.



INSTITUTION VILLAGE LINKAGE PROGRAMME

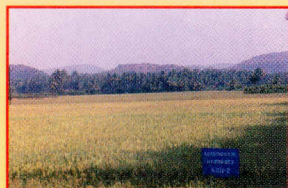
ICAR Research Complex for Goa is one of the Centres implementing the Technology Assessment and Refinement through Institution Village Linkage Programme (TAR-IVLP) successfully under National Agricultural Technology Project (NATP) from September 2000 in five villages of Goa viz., Pilar, Agacaim, Goa Velha, Priol and Veling. The problems about the agro-ecosystem in the villages have been diagnosed through suitable Participatory Rural Appraisal Techniques (PRA). The problems recognized with rice cultivation in the adopted villages are as follows:

- ◆ Low productivity
- ◆ Higher cost of production
- ◆ Lesser returns

The identified problems were tackled through introduction of high yielding rice hybrid KRH-2 released from Regional Research Station (UAS, Bangalore) Mandya.

SUPERIORITY OF RICE HYBRIDS

Rice hybrid performs better due to its hybrid vigour, higher physiological efficiency, wider adaptability to varied environment, higher resistance to pests and diseases with better grain and straw yield.



Important features of KRH-2

- ◆ Maturity period is similar to ruling varieties of the State
- ◆ More productive tillers
- ◆ More number of grains per panicle
- ◆ Resistant to blast and sheath rot
- ◆ Better response to fertilizer and management
- ◆ Higher grain yield
- ◆ Higher straw yield



Farmers perception about the hybrid

The performance of rice hybrid KRH-2 was assessed along with ruling variety of the State viz., Jyoti in the adopted villages. The rice hybrid performed better over the ruling variety both in terms of grain and straw yield. The perception of farmers about the hybrid are :

- ◆ Earliness in maturity
- ◆ Good tillering
- ◆ More grains per panicle
- ◆ Higher grain yield
- ◆ Higher straw yield
- ◆ Lodging at maturity is one limitation of KRH-2

Performance of KRH-2 in the adopted villages (mean of 3 seasons)

Parameters	Jyoti (Ruling variety)	KRH-2 (Hybrid)
Grain Yield (t/ha)	4.55	5.99
% increase in yield	—	31.64
Net returns (Rs/ha)	5,290	11,723
B: C ratio	1.25	1.53

Thus, it may be inferred that for higher productivity and returns, hybrid rice KRH-2 is one of the viable options in the present scenario of Goa.



A view of hybrid rice (KRH-2) at Veling



On the spot assessment of hybrid rice (KRH-2) at Pilar

Material prepared by

Dr. B.L. Manjunath,
CO-PI, NATP - IVLP

Shri. Govekar Y.R.,
SRF, NATP-IVLP

Miss Fernandes S.X.,
SRF, NATP-IVLP

Edited by

Dr. R.N.S. Sundaram,
PI, NATP - IVLP

Published by

Dr. V.S. Korikanthimath,
Director,
ICAR Research Complex for Goa